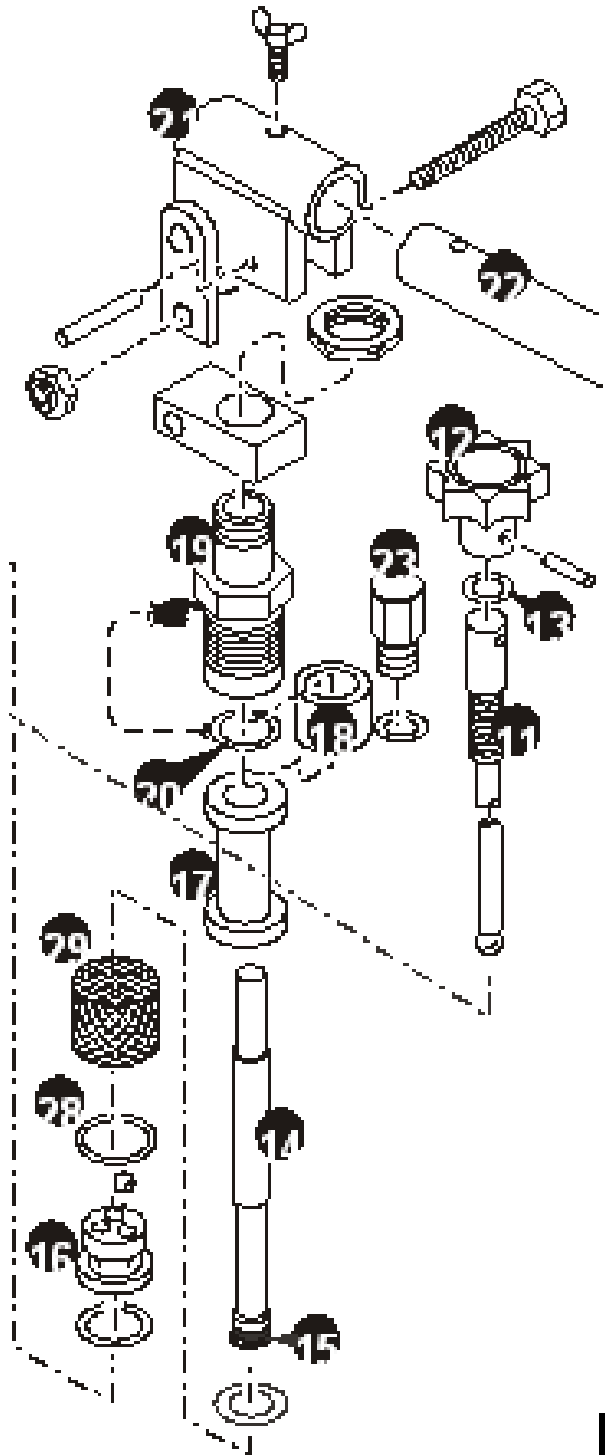


# Spare Parts for JUNG Hydraulic Pumps

Models: JP 15 and JP 25  
(not valid for JP 16 and JP 26)



No.	Description:	Part-number
24	Pump rod assy.	91 010 004-B
22	Pump lever	91 054 089-E
11	Lowering screw	Pu 1 08 000
12		
13		
23	Breather screw	94 040 027-B
23	Pressure screw including 20 O-ring	91 010 010-B
nn	special hexagonal nut for pressure screw assy.	Sm 03 005
18	Intermediate ring	91 259 076-E
14	Pressure piston including 15 cup-type seal	91 254 063-B
15		
17	Pressure cylinder assembly	91 010 012-B
16	Valve 520 bar including 28 O-ring and 29 sieve	91 010 016-B
	Seal Kit	Seal Kit